

1. The Slave Lodge, Church Square and the Slave Tree

Many Capetonians are descended from slaves and the city's slave history is documented in buildings and museums of the central city. The Slave Lodge is now a museum dedicated to remembering this sombre part of Cape history. Nearby, in Spin Street, is a dedication to the slaves who were bought and sold at a slave market on what is now Church Square. Many of the beautiful colonial buildings in the city were built by slaves before the abolition of slavery in 1834.

Monday – Saturday 10:00 – 17:00
Adults R30, children, students and pensioners R15
Transfer to route: **107**
Get off at: Groote Kerk

2. Prestwich Memorial

In 2003 a burial ground dating from the 18th and 19th century was uncovered in the course of construction work. The remains of thousands of people, including slaves and working people, were recovered and placed at the Prestwich Memorial which pays homage to those who lost their lives centuries ago.

Monday – Friday 08:00 – 17:00
Saturday and Sunday 08:00 – 13:00
Free entry
Transfer to routes: **108** or **109** or **114**
Get off at: Alfred

3. Robben Island Museum

Nelson Mandela spent most of his 27 years in prison on Robben Island along with hundreds of other political prisoners. Today the island is a museum which is reached via a short ferry ride. Visitors receive a tour of the island hosted by former political prisoners, providing vivid insights into South Africa's apartheid past.

Daily tours from 09:00 – 13:00
Adults R320, children R180
Transfer to route: **104**
Get off at: Nobel Square/Waterfront

4. District Six Museum

The residents of District Six were forcibly removed from their homes in this vibrant, mixed community when it was declared a white group area in 1966. The museum documents the history of the area, much of which was later torn down and bulldozed. Artefacts and testimonials tell the story of a much-loved neighbourhood whose residents were moved to the Cape Flats.

Monday – Saturday 09:00 – 16:00
Adults R40 – R55, scholars R5
Transfer to route: **103**
Get off at: Lower Buitenkant

5. Parliament

Parliament is at the centre of South Africa's democracy and includes a precinct with the National Assembly, the National Council of Provinces and offices and meeting rooms for Members of Parliament and the Cabinet. Parliament is open to the public who may take a tour or attend a sitting of the house, or observe one of Parliament's many committee meetings which are open to the public. Bring your passport or identity document to gain entry.

Monday – Friday tours from 09:00 – 12:00
Free entry
Transfer to route: **103**
Get off at: Roeland



6. St George's Cathedral

This is one of the oldest cathedrals in southern Africa and has played a prominent role in Cape Town's religious, social and political history. The crypt beneath the cathedral houses an exhibition on the peace marches of the late 1980s that were a political turning point for the country. Across the road, in St George's Mall, is a piece of the Berlin Wall, which fell almost at the same time as former president FW de Klerk announced the freeing of Nelson Mandela and the unbanning of political parties.

Tuesday – Friday 09:00 – 13:00
Free entry
Transfer to route: **107**
Get off at: Groote Kerk

7. Cape Town City Hall

The City Hall was built in 1905 and faces the historic military parade ground, now used by traders and motorists for parking. After his release from prison in 1990, Nelson Mandela first addressed the nation and the world from the City Hall balcony. Concerts and other events are frequently hosted at the City Hall which will soon house an exhibition on the life of Nelson Mandela.

Monday – Friday 07:45 – 15:00
Free entry
Transfer to routes: **102** or **103**
Get off at: Darling

8. Green Point Lighthouse

The square, candy-striped red and white lighthouse was first lit in 1824 to alert ships sailing into Table Bay. It was the first solid lighthouse built on the South African coastline and is still in operation, making it the oldest working lighthouse in the country and light keepers are still trained here.

Monday – Friday 10:00 – 15:00
Adults R16, children R8, students and pensioners R10
Transfer to route: **104**
Get off at: Lighthouse

9. Maritime Centre

The Iziko Maritime Centre provides an overview of shipping in Cape Town and the role it has played in the lives of South Africans from before the establishment of permanent colonial settlements.

Daily 10:00 – 17:00
Adults R20, children, students and pensioners R10
Transfer to route: **104**
Get off at: Nobel Square

10. South African Museum and Planetarium

The 200-year old national museum houses some of South Africa's most valuable historical artefacts. The Planetarium, which forms part of the South African Museum, runs programmes for children and adults. It now offers an advanced digital visualisation experience as part of its regular shows.

Daily 10:00 – 17:00
Adults R30, children, students and pensioners R15
Transfer to route: **101**
Get off at: Michaelis/Upper Long

11. The Company's Garden

The Company's Garden is next door to the South African Parliament and was established by the Dutch East India Company in 1652 to provide food for Dutch ships. The historic food garden has been recreated based on paintings from the time, and the large park-like gardens are home to many established trees labelled with information about their age and origin.

Open all day
Free entry
Transfer to route: **107**
Get off at: Groote Kerk

12. Bo-Kaap Museum

Situated in the historic area that became home to many Muslims and freed slaves after the abolition of slavery, the Bo-Kaap Museum showcases local Islamic culture and heritage. Surrounded by colourful houses, steep cobbled streets, the muezzin's calls to prayer, and children traditionally dressed for Madrasa, visiting Bo-Kaap is a unique Cape experience.

Monday – Saturday 10:00 – 17:00
Adults R20, children, students and pensioners R10
Transfer to route: **101**
Get off at: Leeuwen

13. South African Jewish Museum and Holocaust Centre

The history of the country's Jewish community is set out at the museum which also includes South Africa's oldest synagogue in the museum complex and the Holocaust Centre. The Holocaust Centre includes sections on the pseudo-science of 'race', the roots of anti-Semitism and the institutionalised racism of apartheid. Photographs and a documentary tell the story of survivors of the Holocaust who made their home in Cape Town.

Sunday – Thursday 10:00 – 17:00
Friday 10:00 – 14:00
Adults R60, pensioners R3, under 12s free
Transfer to route: **101** or **103**
Get off at: Annandale

14. The Castle of Good Hope

Built between 1666 and 1679, the Castle is the oldest surviving colonial building in South Africa. It houses a museum and several changing exhibitions. There are guided historical tours daily as well as the firing of the signal cannon and a key ceremony performed by ceremonial guards.

Daily 09:30 – 15:00
Adults R30, children, students and pensioners R15, and booked school groups R5
Transfer to route: **102**
Get off at: The Castle

15. Kramats

Leave the bus at the stop on Victoria Road and walk up a stairway that leads into the mountainous area that holds some of Cape Town's Kramats – holy Muslim shrines. A walk of 99 steps will take you to a beautiful white and green shrine surrounded by rocks and trees. This Kramat is the tomb of Sheikh Noorul Mubeen, and several steps on is another Kramat, believed to be the tomb of his wife, or one of his followers.

Transfer to routes: **108** or **109**
Get off at: Koeël Bay

16. Imizamo Yethu

Imizamo Yethu is a township in Hout Bay. Walking tours are available for visitors interested in exploring the township's diverse culture and lifestyle.

Transfer to route: **109**
Get off at: Imizamo Yethu

17. Mamre Moravian Mission Complex

This complex of centuries old buildings was declared a national monument in 1967. It includes nine historical buildings – The Parsonage, The Church Building, The Organ, The Church Bell, The Cook House, Old Shop, The Long House, The Mill and The School.

Transfer to route: **234a**
Get off at: Denne West

18. Hout Bay Museum

The Hout Bay Museum is situated in Andrews Road and focuses on the history of Hout Bay, its people, forestry, mining, and fishing industry. The museum's collection and displays explore the cultural and natural history of the area. Artefacts include old photographs of Hout Bay and the history of the Khoi and San here, land protests and how the township of Imizamo Yethu was established. Items from shipwrecks are also on display.

Monday – Friday 08:00 – 16:00
Adults R5, children R2
Transfer to route: **109**
Get off at: Scott

19. Koopmans-de Wet House

This is the oldest house museum in South Africa and became a museum in 1914 after the death of the last owners, the sisters Marie and Margarita Koopmans-de Wet. Koopmans-de Wet House includes some of the best antique furniture in the country as well as a priceless collection of ceramics.

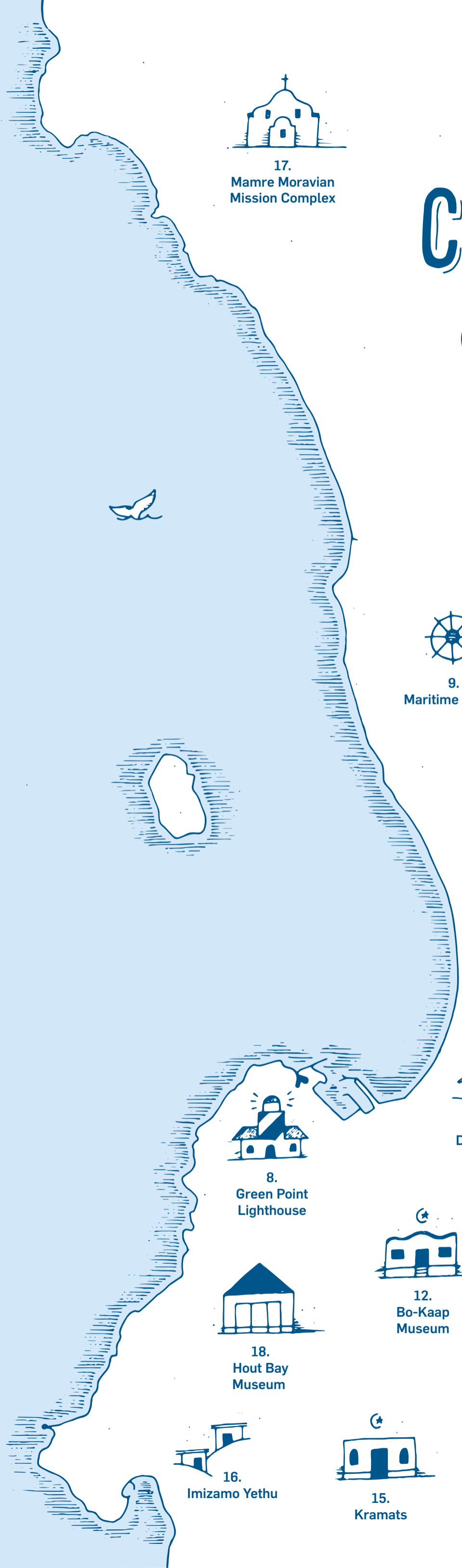
Monday – Friday 10:00 – 17:00
Adults R20, children, students and pensioners R10
Transfer to route: **101**
Get off at: Mid-Long

20. Auwal Mosque

The Auwal Masjid is the first and oldest mosque in South Africa. It was built in 1794 during the first British occupation of the Cape of Good Hope. The mosque was built on land belonging to the freed slave Coridon van Ceylon. Imam Abdullah Kadi Abdus Salaam, also known as Tuan Guru, was the first Imam at this Dorp Street Masjid.

By arrangement, call 074 532 3420
Free Entry
Transfer to route: **101** or **107**
Get off at: Leeuwen

Keep an eye out for the numbered markers on the system map to find the destination you want to visit.



CAPE TOWN HERITAGE MAP

A modern journey through Cape Town's historic past

- 9. Maritime Centre
- 1. The Slave Lodge, Church Square and the Slave Tree
- 6. St George's Cathedral
- 2. Prestwich Memorial
- 13. South African Jewish Museum and Holocaust Centre
- 3. Robben Island Museum
- 19. Koopmans-de Wet House
- 5. Parliament
- 4. District Six Museum
- 20. Auwal Mosque
- 10. South African Museum and Planetarium
- 8. Green Point Lighthouse
- 12. Bo-Kaap Museum
- 7. Cape Town City Hall
- 18. Hout Bay Museum
- 11. The Company's Garden
- 16. Imizamo Yethu
- 15. Kramats
- 14. The Castle of Good Hope

YOUR GUIDE TO MYCITI

MyCiTi is Cape Town's safe, reliable, convenient bus system. Buses operate up to 18 hours a day. You need a **myconnect card**, but the system is easy to use once you know how.

1 Get your myconnect card

Everyone needs their own myconnect card to travel. Buy yours for R35 from MyCiTi station kiosks and some shops.

Remember your PIN

Your card comes with a PIN number, which you will need to load money on your card.

2 Load money on your card for travel

Load any amount as Standard, or save with Mover and discounted travel packages.

	REGULAR USE			OCCASIONAL USE	
	Standard	Mover	Monthly Pass	Off-Peak Travel (OPT)*	Day Pass*
IDEAL FOR	Fares and making small purchases	Cost-effective, regular travel (save 30%)	Cost-effective, regular travel over long distances	Exploring the city on weekends and public holidays	Exploring at any time, on any day
LOAD	Any amount	Mover packages (R35, R50, R60, R80, R100, R150, R200, R300, R400, R600, R1000)	Monthly Pass (R780)	OPT1 (R39) OPT3 (R110) OPT7 (R206)	One-day (R94) Three-day (R234) Seven-day (R514)
VALID FOR	3 years	3 years	1 month from a date of your choice	1, 3 or 7 consecutive calendar days	1, 3 or 7 consecutive calendar days
FARES	Standard fares apply	Mover fares apply (save 30%)	Unlimited travel anywhere, at any time	Unlimited travel (except Airport) during the off-peak*	Unlimited travel (except Airport) at any time*
GET IT AT	Station kiosks, retailers, Absa cash-accepting ATMs	Station kiosks, retailers, Absa cash-accepting ATMs	Station kiosks	Station kiosks	Station kiosks

*For prices of these packages including travel to and from the Airport, see www.myciti.org.za

3 Tap in and Tap out

Start your trip

Tap in by holding your card against the validator as you enter a station or board a bus at a stop.

End your trip

Tap out by holding your card against the validator as you leave a station or exit a bus at a stop.

4 Fares – how much will my journey cost?

You pay for the distance you travel, which is calculated from where you tap in to where you tap out.

<p>Are you a MyCiTi Mover?</p> <p>Save 30% or more with MyCiTi Mover packages, available from MyCiTi station kiosks. Load R35, R50, R60, R80, R100, R150, R200, R300, R400, R600 or R1 000 on your myconnect card.</p>	<p>YES</p>	<p>Are you starting your trip in the Peak fare period (weekdays 06:45 - 08:00 or 16:15 - 17:30) or in the Saver fare period (all other times, including weekends and public holidays)?</p>	<p>Peak</p>	MyCiTi Mover fares								
				Saver	0-5 km	5-10 km	10-20 km	20-30 km	30-40 km	40-50 km	50-60 km	>60 km
				Peak	R8.80	R12.40	R16.50	R18.20	R19.80	R22.70	R25.40	R27.70
				Saver	R6.40	R8.30	R10.40	R12.20	R13.50	R15.90	R18.00	R19.70
<p>NO</p>	<p>NO</p>	<p>Peak</p>	<p>Saver</p>	MyCiTi Standard fares								
				Peak	0-5 km	5-10 km	10-20 km	20-30 km	30-40 km	40-50 km	50-60 km	>60 km
				Peak	R13.90	R17.50	R23.50	R25.80	R28.10	R32.20	R36.10	R39.40
				Saver	R9.10	R11.70	R14.80	R17.40	R19.20	R22.60	R25.50	R27.90

For journeys linking with the Airport station, add R73 (Standard) or R52.10 (Mover).

Plan your journey and save

You pay more in the Peak fare period (weekdays 06:45-08:00 and 16:15-17:30), and less at all other times including weekends and public holidays (the Saver fare period). You are charged Peak or Saver fares depending on when you start your trip.

Changing buses

Change from one route to another, and only pay one fare. Tap out at a station or on a bus and tap in again within 45 minutes to continue your journey. To change buses inside a station, make your way from one bus to another without tapping.

MyCiTi routes

- T01** Dunoon - Table View - Civic Centre - Waterfront
- T02** Atlantis - Table View - Civic Centre
- T03** Atlantis - Melkbosstrand - Table View - Omuramba
- T04** Dunoon - Century City
- A01** Airport - Civic Centre
- 101** Vredehoek - Gardens - Civic Centre
- 102** Salt River Rail - Walmer Estate - Civic Centre
- 103** Oranjezicht - Gardens - Civic Centre
- 104** Sea Point - Waterfront - Civic Centre
- 105** Sea Point - Fresnaye - Civic Centre
- 108** Camps Bay (clockwise)
- 107** Civic Centre - Camps Bay (anti-clockwise)
- 108** Hangberg - Sea Point - Adderley
- 109** Hout Bay - Imizamo Yethu - Sea Point - Adderley
- 110** Table Mountain
- 114** Sea Point - Civic Centre
- 213** West Beach - Table View - Sunningdale
- 214** Marine Circle - Table View - Parklands
- 215** Sunningdale - Gie Road - Wood
- 216** Sunningdale - Wood Drive - Wood
- 217** Melkbosstrand - Big Bay - Table View
- 230** Duynfontein - Melkbosstrand
- 231** Atlantis - Atlantis Industria East
- 232** Atlantis - Avondale - Protea Park - Atlantis Industria West
- 232a** Atlantis - Avondale - Protea Park - Atlantis Industria West
- 233** Atlantis - Saxonsea
- 233a** Atlantis - Saxonsea
- 234** Atlantis - Mamre
- 234a** Atlantis - Mamre
- 235** Atlantis - Pella
- 236** Atlantis - Sherwood
- 237** Atlantis - Robinvale
- 251** Century City - Montague Gardens
- 260** Summer Greens - Woodbridge Island
- 261** Omuramba - Salt River - Adderley
- 262** Century Gate - Century City Rail
- D01** Khayelitsha East - Civic Centre
- D02** Khayelitsha West - Civic Centre
- D03** Mitchells Plain East - Civic Centre
- D04** Kapteinsklip - Civic Centre

- Station
 - Station with myconnect services
 - Stop
 - Stop only accessible in direction indicated
- Routes, stops and stop names are subject to change.

